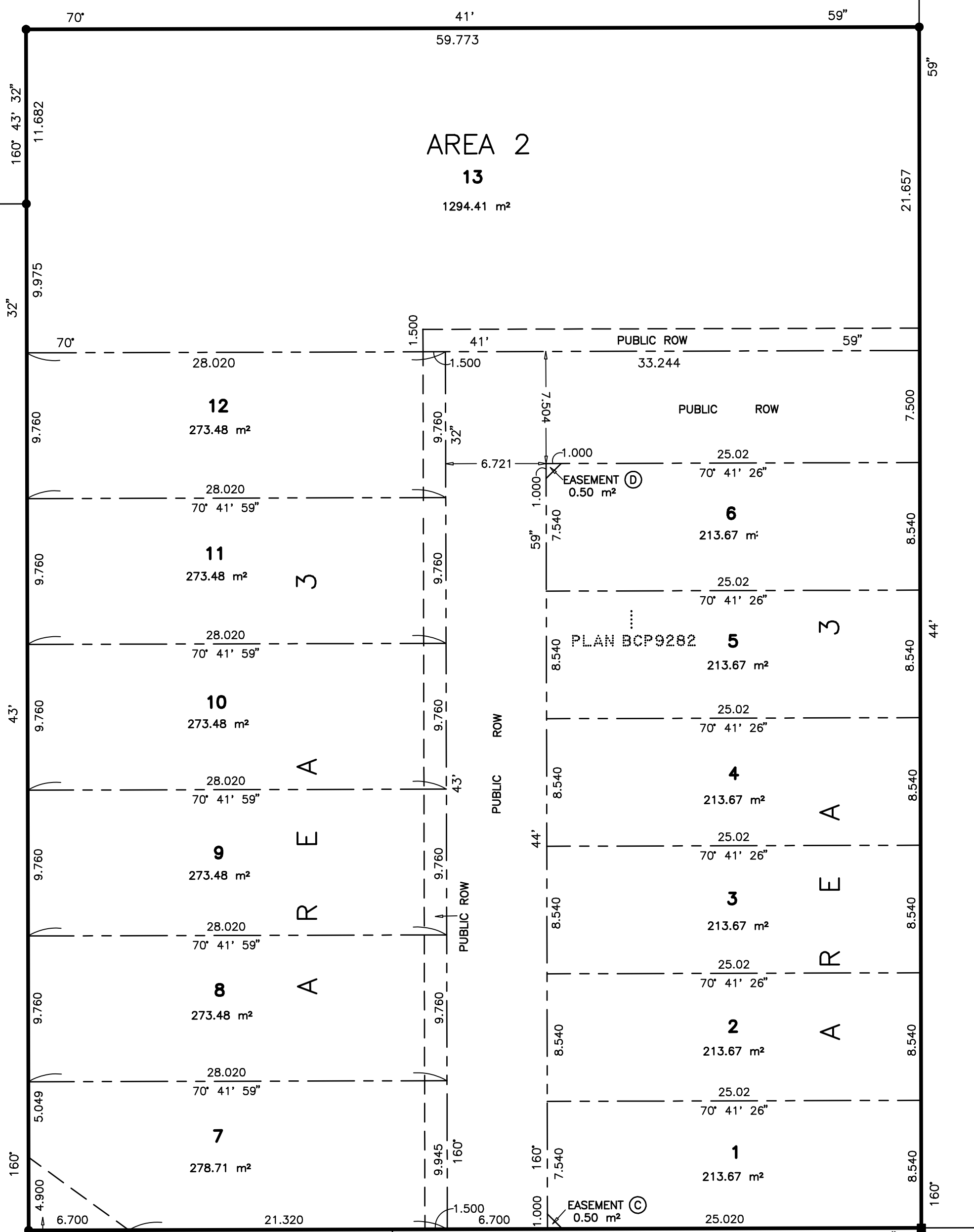
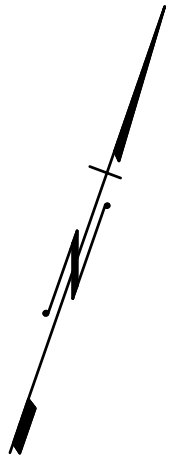


Rem. B

PLAN LMP44342



ROAD MILLER

A

REFERENCE PLAN 2679

MILLARD ROAD

Rem. B

PLAN LMP44342

1
PLAN 7806

LEGEND :

- - LEAD PLUG
- - IRON POST
- - - - - EXTENT OF EXISTING PARCEL
- - - - - PROPOSED LOT LINE
- - - - - EASEMENT

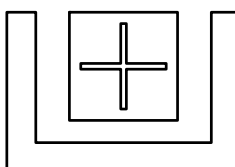
CERTIFIED CORRECT :
LOT DIMENSIONS ARE CORRECT ACCORDING TO GROUND SURVEY.

- R13 06/02/17 EASEMENT CHANGED TO ROW
- R12 12/08/16 NEW EASEMENT ADDED
- R11 11/08/16 LOT CONFIGURATION CHANGED
- R10 08/04/16 LOT CONFIGURATION CHANGED
- R9 06/07/16 TOPOGRAPHIC DATA INSERTED
- R8 04/14/16 LOT 11, 12 & 6 CONFIGURATION CHANGES
- R7 04/04/16 LOT CONFIGURATION CHANGED
- R6 01/29/16 LOT CONFIGURATION CHANGED
- R5 12/10/15 LOT CONFIGURATION CHANGED
- R4 12/03/15 LOT CONFIGURATION CHANGED
- R3 12/02/15 LOT CONFIGURATION CHANGED
- R2 08/20/14 BUILDING ENVELOPE AND AREAS REMOVED

DEC 08, 2016 B.C.L.S.

UNDERHILL GEOMATICS LTD.

ENGINEERS & SURVEYORS



DRAWN BY JC/KY/XS
JOB NO. V14052

SCALE 1:250
DATE 06/20/14

TITLE PLAN OF PRELIMINARY SUBDIVISION OF LOT 1,
DL 490, GROUP 1, NWD, PLAN BCP9282

CLIENT SNUG COVE HOUSE SOCIETY

DRAWING NO. H-2770B

REV. 13

SHEET 1 OF 1

210A-3430 BRIGHTON AVENUE
BURNABY, B.C. V5A 3H4
TEL. (604) 732-3384 FAX (604) 732-4709